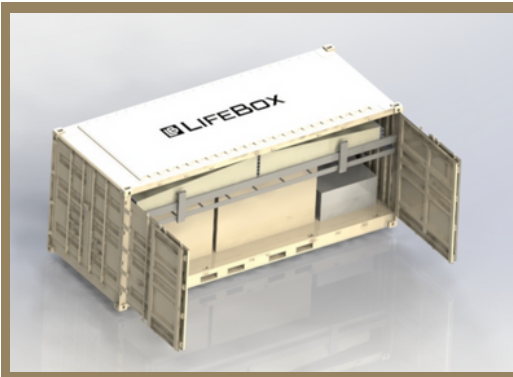


COMPANY OVERVIEW

LifeBox designs products to reliably deploy a roof over people's heads in crises. The innovation of our product creates a sustainable solution to a recurring problem. The LifeBox L7 Model is the most efficient use of container space on the market. Our product is a revolutionary tool for base camp contractors to build massive camps in mere hours. Given a high degree of configurability, the L7 can meet short- and long- term infrastructure needs in military and natural disaster environments. The shipping container shell allows ease of transportation and the modular design allows for mass configurations and the ability for bases to scale. The L7 is the simplest basecamp to set up, allowing contractors to focus on more critical tasks of supporting operations.



CERTIFICATIONS

UEI: KT47BQEK9V6

NAICS: 624221, 624230,
541330, 541420

SB - Small Business

PRODUCTS /CONFIGURATIONS

- Command Center
- Hospital/Health Facility
- Network Server Storage
- Sleeping Quarters
- Dining Hall
- Administration/Office

The goal of the L7 design is to minimize the movement needed to construct the unit while maximizing the storage space, ultimately creating a more efficient base camp. With this in mind, we used materials compatible with Department of Defense (DoD) requirements; this innovative design uniquely suits us for natural disaster situations when speed, durability, and size are of the utmost importance.

The modular design can be modified for a variety of applications, including adding several units front to back (to expand overall footprint). Markets include natural disaster, base camps, DoD, and many others. The maximum square foot per shipping container on a single truck, ease of set up, and durability set the L7 apart from existing options in the market. Focusing on long-term requirements, the L7 temporary structure can be converted into a permanent structure with the purchase of an upgraded kit.

OPPORTUNITIES

- Natural Disaster
- Department of Defense
- Humanitarian
- Medical
- Affordable Housing

FEATURES

- 1,008 square feet extracted from one container
- Cost efficiency per square foot
- General structure design easily blends in with local buildings
- Time to deploy: 2 workers in two hours
- Large floor area for command centers and more
- Galvanized steel wall paneling with EPS foam insulation
- Gasketing system to improve overall insulation factor
- Standard forklift pockets for easy onsite maneuverability
- Low profile doors adhering to ADA width requirements
- Capable of intermodal transportation
- No special tools are required for deployment
- R-14 insulation rating on all panels
- Able to withstand 150 MPH winds and heavy snow
- Rot, mildew, rust, and decay-resistant design
- Easily customizable interior to fit specific needs
- Built around TEU frame and forklift sockets for easy transportation
- Secured stowed design to protect during transportation
- TRL 4

DIMENSIONS

Stowed:

- 20' x 8' x 8'6"
- 160 SF Stored
- 17,000 LBS Net Weight (approximate)

Deployed

- 56' x 18' x 8'6"
- 1,008 SF Deployed
- Interior Minimum Height: 77.5"
- Interior Maximum Height: 89.5"

